

ALL ABOUT CLEEVE

Vol: 32-01 **JANUARY 2024** FREE

YOUR VILLAGE MAGAZINE
INDEPENDENT - SELF SUPPORTING - DELIVERED FREE TO EVERY HOME

BROCKLEY CROSSROADS AT NIGHT



Photo courtesy: Andy Ballard

All About Cleeve is also available on line <http://www.cleeveparishcouncil.co.uk/>

Closing COPY DATE: 15th February (for MARCH 2024 issue.)

CHAIR'S WELCOME

Welcome to 2024: belated Happy New Year to all our readership. Plenty went on in Cleeve during the Christmas period and there is more planned for the coming months as you will read later in this edition. If you are new to the village, participating or attending events contained in this magazine is a great way to get to know our people; for next year's reference, the Village's Pantomime especially is great fun as well as highly rated by all who attend (in some cases more than once).

And finally, my annual plea with my Treasurer's hat on: please would everyone encourage local businesses to advertise in AAC and also make advertisers aware that their advert in AAC was noticed.

*Elizabeth Vaughan
Chair*

FOCOS

The sole aim of FOCOS (Friends Of Cleeve Over Sixties) is to provide periodic social events for the Senior Citizens of Cleeve [and Claverham]. A number the current FOCOS team are eligible to become recipients of the benefits of FOCOS themselves!!

So, if there is anyone in the village who would like to join FOCOS and get involved with events such as the Mystery Outing, Christmas Party, Afternoon Teas, Bingo, etc. and have great fun at the same time, we would love to have you join us. [there are occasional Committee meetings, but these are kept to a minimum!] Please ring me for a chat if you would like further details of how you can get involved.

Gill Roe, Chairman, FOCOS - 832917

FOCOS Christmas Party

We would like to thank Marion Atwell, Tony Russell, Rob Bruce, Neil Carter, David Vaughan and John Hook who kindly drove some of our guests to [and from] the event.

Gill Roe – Chairman of FOCOS

ALL ABOUT CLEEVE COMMITTEE

Elizabeth Vaughan	Chair	e.m.vaughan@icloud.com	07787 781716
Hilary Perry	Editor	hilary562000@gmail.com	
Diana Cook	Secretary		834621
Steve Molloy	Distribution		834412
Elizabeth Vaughan	Treasurer	e.m.vaughan@icloud.com	07787 781716
Pauline Leverett	Graphics		833648
Sarah Cush	Member		832059

We are grateful to the volunteers who walk the village monthly to deliver your free copy
Please note articles submitted by individuals do not necessarily represent the views of All About Cleeve. A full copy of our editorial DISCLAIMER / Committee minutes are available from the Secretary.

"The service provided by Parker's was exceptional. The team were transparent and maintained regular contact with me throughout the process. From viewings to completion, Parker's worked hard to establish a sale."



01275 463096



www.parkers-ea.co.uk

info@parkers-ea.co.uk
1/3 Station Road, Backwell,
North Somerset, BS48 3NW



Parker's

Estate Agents & Property Lettings

Successfully selling and letting homes since 1989

CHURCH NOTICE BOARD - FEBRUARY

SUNDAY SERVICES

1st Sunday: 4 February

10.00am - Holy Trinity: Shared Parish Communion

6.00pm - Holy Trinity: *Stories For Change*

2nd Sunday: 11 February – Sunday next before Lent

10.00am - Holy Trinity: *Waymarks* - Simon Stevens + Friends

10.00am - St. Barnabas: Shared Parish Communion

Wednesday 14 February – Ash Wednesday

7.00pm - Holy Trinity: Shared Communion with Imposition of Ashes

3rd Sunday: 18 February – The First Sunday of Lent

10.00am - Holy Trinity: Shared Parish Communion

4th Sunday: 25 February

10.00am - St. Barnabas: Shared Parish Communion - with Area Dean

1st Sunday: 3 March

10.00am - Holy Trinity: Shared Parish Communion – with Bishop Alastair Redfern

THURSDAY SERVICES

1st - 9.30am - Holy Trinity - Healing & Wholeness + Holy Communion

8th - 9.30am - Holy Trinity - Healing & Wholeness

15th - 9.30am - Holy Trinity - Healing & Wholeness + Holy Communion

22nd - 9.30am - Holy Trinity - Healing & Wholeness

29th - 9.30am - Holy Trinity - Healing & Wholeness + Bread of fellowship

FAITH HOPE LOVE - Team Vicar: Rev. Nigel B Thomas - 01934 283340



MEMORIES OF CLEEVE SCHOOL IN THE WAR YEARS

Many people walking into Goblin Combe and passing the old stone building on the left before walking through the gate at the bottom into the actual wooded combe, may not know that the building was in fact a school for many years in the early half of the 20th century. One clue that gives this away is the stone inscriptions above the 2 entrances that read 'boys' and 'girls'.

I attended this school from about 1935 - 1942. During that time there were 3 teachers: Miss Hector, Mrs Young and the Headmistress Miss Smith. Being war time a group of evacuees from London were sent to the school. As it was a small village school and we only had 3 teachers, the influx of extra children necessitated that our day was split into 2 sessions in order to facilitate teaching for the extra kids. The Cleeve pupils were taught in the morning session and the evacuees were taught in the afternoon session. After a morning in the classroom we were let out of the building after lunch and the afternoons were spent either picking nettles or ragwort from nearby farmer's fields. The nettles were dried in various houses in Cleeve that had cellars and were used for medicinal purposes.

One other clear memory is of hearing loud aeroplanes passing over the school one day. When we rushed outside to see what was flying overhead our teacher could clearly see the German insignia on the underside of the wings. We heard the deep sound of exploding bombs a few moments later. It transpired that the bombs were dropped on the Avalon furniture factory at Yatton.

Nancy Ballard

SOUPA THURSDAY WARM ROOM

Holy Trinity's Warm Room initiative is now at its half way point of the winter.

In that time, we have had around 40 different people coming along to enjoy the warmth, the atmosphere, the company, the fun and the soup! It was a great pleasure to be open throughout the Christmas and New Year period

Since November, we have had our guests with an age range from a few months to 80+. We have had the Village Agent, Sarah Friend, along on a couple of occasions, giving out lots of advice and information, regarding numerous topics of concern.

Sessions are between 12noon and 4pm every week, so why not pop along and discover the Soupa Thursday world - you will be glad that you did!

If you need any further details, ring Lin on 838515, who will be able to provide lifts if needed.

FOCOS BINGO EVENING

An early note for your 2024 diaries – the FOCOS Bingo Night is booked for Friday 12th April at Cleeve Village Hall

As ever at a FOCOS Bingo Evening there will be good food, great prizes and a guaranteed fun evening. A bar will be available for the evening at the Hall and transport will be available to and from the Hall.

All profits will help to provide for the FOCOS Mystery Outing for 2024.

**NORTH SOMERSET
WEDDING & EVENT CARS
PLUS EXECUTIVE AIRPORT
& CRUISE TRANSFERS**

07599 564794

Professional, Reliable, Affordable

When you book with us, you know you are in the hands of a quality brand that is the first choice for any couple thinking of getting married or for any celebratory event such as Proms, Funerals and Birthdays.

We happily embrace the LGBTQ+ community.

Treat yourself to a luxury journey to your airport, cruise port or City. Complimentary snacks and choice of drinks. Arrive in comfort and style. Our rates are often more economical than a standard taxi. Deposit from £25.00 to secure. Please check sample rates on our website.

We look forward to taking care of you.

northsomersetweddingandeventcars.co.uk



QUALITY AND VALUE
from the heart of the wood
fountain timber
Open 6 Days



Landscaping



Fencing



Gates



Garden Furniture



Decking & Cladding



Firewood

Call 01934 862710 | fountaintimber.co.uk



PLANT OF THE MONTH
***Chimonanthus praecox*, Winter Sweet**

The winter garden can be a feast of fragrance and foliage and one such treat for the senses is Winter Sweet, an often overlooked intensely scented shrub that flowers throughout January and February. Pale yellow pendulous flowers bloom from bare stems to turn this understated shrub into a shower of luminous stars. A little space is needed as it will eventually fill a gap around 2.5 metres wide and if left unpruned 4m high but *Chimonanthus* is slow growing so there is no panic.

Winter Sweet thrives in full sun but most importantly in a sheltered position so protection from wind by a wall is ideal. It does produce fairly ordinary green leaves throughout spring and summer but ignites autumn with a vibrant yellow show. This deciduous, bushy shrub benefits from a climber intertwining around its canopy to bring stems to life whilst waiting for the main event; try a clematis.

Choose between *C. praecox* 'Luteus' which has pale primrose-yellow flowers or *C. praecox* 'Grandiflorus' which boasts golden blooms with maroon centres.

Winter Sweet will grow in any soil type and requires very little intervention so it is a perfect shrub for busy people wanting to punctuate their winter garden with scent; just be patient, new shrubs can take a few years to flower.

Debi Holland



TOUT'S

PASSIONATE ABOUT FOOD

PRICE LOCK

100+ PRICES DROPPED & LOCKED



£5.75

4x75cl
RRP £6.75



£3

250g
RRP £3.30



£1.50

300g
RRP £1.80



£1.25

170g
RRP £1.35



£2

224g
RRP £2.55

LOCKED UNTIL 31ST MARCH 2024

T&Cs apply. Prices correct at time of going to print. Tout Ltd reserve the right to withdraw offers at any points. Subject to availability. E&OE.

YATTON MUSIC SOCIETY SPRING CONCERTS ST MARY'S CHURCH YATTON

The first concert of the season on Saturday 3rd February 7.30pm will be 'Vivaldi by Candlelight' performed by the Bristol Ensemble led by Roger Huckle. Music will include Vivaldi's four seasons, Pachelbel's canon, Albinoni's concerto for oboe etc. The Church will be lit by candles to create a wonderful atmosphere for beautiful music.

The second concert is on Saturday 24th February 7.30pm and will be an evening of sparkling music by the brilliant Rockhampton Wind Quintet, with flute, clarinet, oboe, bassoon and horn.

Ticket prices are £10 Students over 16 £5, accompanied children free. The audience is assumed of a warm welcome, refreshments and wonderful music.

Details of these and future concert and can be found on the society's website www.yms.org.uk

David Ford

HOLY TRINITY PANCAKE LUNCH Shrove Tuesday – 13th February 2024 Cleeve Village Hall – 12 noon until 2pm

Enjoy a treat before the start of Lent, at the Holy Trinity Pancake Lunch.

The Lunch will consist of soup, then a bacon or cheese roll, and then be followed by **two** tasty sweet filled pancakes, together with as much tea/coffee as you can drink.

The cost of the event will be £6.

Tickets will need to be booked [to plan catering requirements] and are available from Lin on 838515 or Gill on 832917

Come along for some great food, some good fun and lots of friendship.

HOLY TRINITY - LENT LUNCH

Holy Trinity's 2024 Lent Lunch is to be held on Tuesday 27th February in the Church Room.

Lunch will be from 12 noon until 2pm – **a choice of home-made soups, followed by a cheese roll, a sweet, plus tea/coffee.**

Tickets, which cost £6, are available from Lin on 838515 or Gill on 832917. You can pay on the day, but numbers are needed for catering purposes

All funds raised on the day will be donated to the Clevedon Foodbank.

Come along and enjoy a good wholesome lunch and support a local charity doing great work in our community.

TIP FROM CLEEVE NURSERY

Repot your houseplants, if they need it, into one pot size larger using good multi-purpose compost [such as our own]. Use moss poles to support taller plants

SUN HALL 新好
CHINESE FOOD TO TAKEAWAY



7 BISHOP ROAD, CLEEVE, BRISTOL BS49 4NQ
01934 876888

justU
counselling

07519 554016
Reasonable Rates
First session free!

Amanda Bangham FdSc, Dip Couns, Mbacp

justucounselling@gmail.com
www.justucounselling.co.uk




safe
207533

LOCAL PLUMBER

FOR ALL YOUR PLUMBING & HEATING REQUIREMENTS FROM TAP WASHERS TO CENTRAL HEATING



L.D. HULLAH 01934 833357
MOBILE: 07976 833974

HEALTHY FIT LIFESTYLE

PERSONAL TRAINING
QUALIFIED GP EXERCISE
REFERRAL TRAINER



1-2-1 PERSONAL TRAINING - individual sessions working on your personal goals, different times and days available at Cleeve Cricket Club

GROUP CLASSES at Claverham Village Hall
Mondays @ 6.45pm - Full Body Circuit Training
Wednesdays @ 6.15pm - Legs, Bums & Tums

Please get in touch to book your place

chelseahealHFL@gmail.com **07944 408481**

www.manwithavan.info

Nigel




Checkatrade.com

Cheaper than a skip!

I have TWO vans, one for **RUBBISH clearances** and one for **REMOVALS.**

Nigel 'I'm local'
077427 91139

CLEEVE LAWN TENNIS CLUB
Cleeve, Bristol BS49 4NP



FREE MEMBERSHIP *Try to Buy*
FOR THE MONTHS OF JAN & FEB

Simply turn up at the Club on **Wednesday's at 7.00PM,**
Sunday's at 2.00pm or **Sunday Family time at 6.30pm** to temporarily join

Use the facilities until the end of Feb and decide if you wish to join.

CALL PHIL ON 07971444501 FOR MORE INFO

FOCOS
(Friends Of Cleeve Over Sixties)

Winning numbers for the FOCOS lottery

4th November	43	Clive and Carole Perrot
25th November	49	Rob Bruce
2nd December	40	Ray King
30th December	38	Pam Wild
6th January 2024	41	Marianne Pitman

Congratulation to our winners, in a very small cluster group, and 'thank you' to everyone with a FOCOS lottery ticket, as the lottery underpins all our other fund-raising events.

YATTON LOCAL HISTORY SOCIETY

Tuesday February 6th. Talk by Samantha Ball on Weston Playhouse.
7:30pm Yatton Methodist Church BS49 4DW.
Contact yattonlocalhistorysoc@gmail.com

Marianne Pitman

TIPS FROM CLEEVE NURSERY

Trees that have lost their leaves can be pruned now. Cut out dead, diseased and damaged wood. Thin out over crowded areas but avoid removing too much in one year. It's better to spread heavy pruning over several years and limit the amount of wood you remove at any one time to no more than a third of the total. Birch trees may bleed badly if pruned too late.

Regularly remove dead and dying leaves and flowers from plants in the greenhouse. If you leave them, you may have problems with grey mould developing. Regular ventilation on warm days will help to avoid this too.

Plant shallots. They prefer soil that hasn't been used to grow onions, leeks or shallots for several years before and a well manured plot. Delay planting onion sets until warmer

STORIES FOR CHANGE


What is it like to be a refugee?
Personal stories with Tahmina and Ali

Holy Trinity Church
Main Road, Cleeve BS49 4PN
Sunday 4 February 6pm

Stories from Pakistan & Sudan
from Michael Loader

Light bites by Reem
Free event.
All welcome.

An evening of stories, song, music, food & hope!



AAC Advertising Rates

Eighth page - £52.50 p.a.
Quarter page - £105 p.a.
Half page - £185 p.a.
Full page - £290 p.a.
Back page - £370 p.a.

Interested? Contact us for details
5,000 copies published annually
and read by many more

STAR 65 BEREAVEMENT GROUP

Free and open drop in sessions to our peer supported Bereavement and Loss group every 2nd and 4th Wednesday 4-6pm and Saturday 12-noon at 65 High Street, Nailsea. Come and chat or just listen.

For information contact:
Pam Lambert 01275 462820
or 07977 9564
Gill Atkinson 07722 298550

COMMUNITY RESILIENCE

The Village Hall is the assembly point and operating base for the community resilience team (when mobilised) providing help and assistance in an emergency.

So if you need (or are willing to offer) help in an emergency and can not contact Community Resilience by phone please go along to the village hall.

Contact details for Community Resilience can be found in the directory at the back of this magazine

Keith C. Britton & Son
Funeral Directors 

Independent Family Funeral Directors.
Established over 55 years

10 High Street, Yatton, North Somerset BS49 4JA
Tel: **01934 832115**

Private Chapel of Rest
24-hour emergency service 365 days a year.
Home visits available for funeral arrangements and no obligation pre-paid plans.

Arthur E. Davey & Sons Ltd

Independent Family Funeral Directors
01275 852307
Serving the community for more than three generations 

Pre-payment Plans
Private Chapels of Rest
Home visits

 Tony Davey Dip F.D. M.B.L.F.D.
Nicola Davey Dip F.A.A.
David Johnston
Yvonne Wadsworth

 **82 Silver Street**
Nailsea
BS48 2DS
www.aedavey.co.uk

Mason's
FUNERAL DIRECTORS

Mark Mason
DIPFD, LMBIFD

For a friendly, caring and professional service.

01934 624222

Covering Cleve and surrounding villages

 47 Drove Road
Weston-super-Mare
BS23 3NN 

www.masonsfuneral.co.uk

CLEEVE PARISH COUNCIL UPDATE

Council Meetings: Meetings are held in Cleeve Village Hall on the 2nd Tuesday of each month (except August and December when no meetings are held).

Details of meetings, agendas and minutes continue to be published on our website.

You can access our website at www.cleeveparishcouncil.co.uk or via this QR code



Our Chair of the Parish Council is Ronnie Morley with Ben Whistance being our Vice Chair.

Your other Councillors are Hilary Burn, Marianne Pitman, George Stringer, Geoff Pritchard and Colin Knowles.

30 mph limit through Cleeve: On Monday 8 January 2024 Councillors met with Hannah Young, NSC Executive Lead for Highways and Transport. Following that meeting we are delighted to confirm that NSC have committed to put in place a 30-mph limit for the “centre of the village”. Further work will be necessary to confirm the start and end points and hopefully achieve a longer stretch which was sought following the Traffic Survey in 2022.

Millennium Garden/Community Orchard: Pruning/cleaning of the area took place on Sunday 7 January 2024 and we were delighted that the weather was kind to us and a goodly number of residents came along to assist.

We are indebted to Cllrs Ronnie Morley, Hilary Burn, Ben Whistance, George Stringer and Colin Knowles plus Denis Burn, Heidi Andrews, Carolyn Woodthorpe, Mark Daniel, Judy Kiernan, Pat Walmsley, Michael Morley, Chris Monkman and Elizabeth Vaughan.

Great progress was made towards creating this new community resource and we look forward to the next phase of work.





COUNTRY COLLECTION

Contact us at:
Tel: 01934 832269
simon@countrycollection.co
www.countrycollection.co

Visit us at:
Country Collection,
Rhodyate Hill,
Congresbury, North
Somerset
BS49 5AJ

A family run business with over 20 years experience. Based in Congresbury, North Somerset. We offer a wide range of wood, multi fuel, gas and electric stoves and fireplaces as well as new outdoor fires. Our installers are HETAS & Gas Safe registered for full peace of mind.

Emergency Bleed Kits: Following a joint initiative by the NHS and the Police Red “Blood Boxes” have been placed by the defibrillator at the Village hall and also on the notice board at the Goblin Combe Car Park.

“Kids Corner” at King George V Playing Field: We are pleased to report that the Kids Corner have been successful in obtaining Grant Funding from the Bristol Airport Community Fund and remedial and improvement work will now be completed.

Facebook and Website: You will find us on Facebook if you search **Cleeve Parish Council** and like our page. We update various issues of local interest, and activities of the Parish Council.

We are also pleased to post a link on our website to view the current “All About Cleeve” each month.

*Andy Warren
Clerk to Cleeve Parish Council*

I can be contacted on 07932 191964 and by email on cleeveparishcouncil@hotmail.co.uk www.cleeveparishcouncil.co.uk

TIPS FROM CLEEVE NURSERY

Clean and disinfect plant trays and pots to prevent carry over of disease from one year to the next. Bamboo canes can harbour pests inside their hollow centres (especially red spider mites) so treat these or bin them and buy new.

Make a log or rock pile in a quiet corner to act as a wildlife refuge.

COURT DE WYCK

Have you ever wondered why the name Court de Wyck is used for Claverham school and the area around Claverham Village Hall?

Although probably the Wick family come from Nynnehead in Somerset the name is associated with Wick St Lawrence (wick probably meaning bay or) which the family also owned. The manor of Wick in Claverham included Claverham High Street, the area around the school, Bishops Road and part of the Main Road A3760 up to Bickley.

The manor owners from 1086 were Giso Bishop of Bath and Wells, in 1338 John Wyck, the Newtons in the 1400s and the Pouletts from south Somerset owned it for 200 years. Since the Newtons it was let to various families as a farm.

A house was built by the Wicks in the 14th century but possibly as early as 1280. It was described as a farmhouse in 1711 but was in ruins by 1799.

In Yatton Church there is a tomb effigy to Egilina de Wyke and the Wick coat of arms is in the eastern chapel window high up on the left.

Near the house was an avenue leading to a courtyard where later the arms of Poulett and Popham were displayed on an arch leading to the chapel with a bell. There was also an orchard probably to provide cider for drinking as the water was not suitable for drinking.

Stephen Cox a Bedminster tanner bought it for a tannery in 1815 -20. This would have been when Earl Poulett sold his estate between 1815-20 to cover debts at the end of the Napoleonic Wars. The tithe barn became the tannery. There is a pond on site as a water supply is essential for a tannery. The old house was mostly in ruins with only one room habitable.

A Georgian house was built around 1820 by Mr Cox on the original site incorporating some of the original features. The Doric columns of the present house came from the previous one.

There were six bedrooms as well as other rooms and cellars. Some features including a door and its surrounds were removed and incorporated into the newly erected Cleeve Court. Also after sometime languishing in the orchard the lions from the gate posts went to adorn the gate way at Brockley Hall.

Across the road is Bishops Farm and this was built by 1821 in the home ground by Elizabeth Ash whose family had farmed Court de Wyck later in 1700s and early 1800s.

By 1840 it was owned by the Smythe-Pigotts but notably the tenant was John Bishop hence Bishops Road.

The whole estate was auctioned and split up in 1909 by the Smyth Piggotts.

In 1918 a Mr Milward and his two sons Leslie and Frank from Northampton took charge of the tannery. In 1928 the tithe barn used as the tannery burnt down with the loss of 100 jobs but was rebuilt. It closed finally in 1970.*

The sons eventually lived in two new houses one on Bishops Road and the other on Brockley Way in the 1930s. Both were away from the prevailing wind and the smell from the tannery!

Imperial Tobacco had a research unit investigating new materials for smoking and Fairey Hydraulics (aviation) followed. One of their designs were claws for helicopters to secure themselves to aircraft carrier decks.

Seventy-seven eco-friendly houses incorporating solar panels have been built on site.

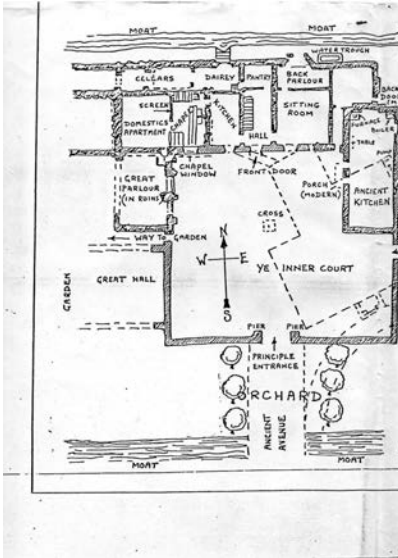
Court de Wvck



Dye Vat



A DYE VAT AT COURT DE WYCK TANNERY



Plan of Court de Wyck

This is a transcription of the Commons Registration Act 1965 concerning the Quarry. (See page 16)

COMMONS REGISTRATION ACT 1965
Reference No. 32/7/33

In the Matter of Cleeve Quarry,
Cleeve, Long Ashton Rural District, Somerset

NOTICE

This reference relates to the question of the ownership of land known as Cleeve Quarry, Cleeve, Long Ashton Rural District being the land comprised in the Land Section of Register Unit No. C.L.125 in the Register of Common Land maintained by the Somerset County Council of which no person is registered under section 4 of the Commons Registration Act 1965 as the owner.

Following upon the public notice of this reference no person claimed to be the freehold owner of the land in question and no person claimed to have information as to its ownership.

I held a hearing for the purpose of inquiring into the question of the ownership of the land at Taunton on 6 December 1972. No person attended the hearing.

In the absence of any evidence I am not satisfied that any person is the owner of the land and it will therefore be subject to protection under section 9 of the Act of 1965.

I am required by regulation 30(1) of the Commons Commissioners Regulations 1972 to explain that a person aggrieved by this decision as being erroneous in point of law may, within 6 weeks from the date on which notice of the decision is sent to him, require me to state a case for the decision of the High Court.

Dated this 11th day of December 1972.

A. A. Baden Fuller
Commons Commissioner

History of Cleeve Quarry, Cleeve Hill Road, Cleeve

Not much has been recorded about Cleeve Quarry, but what we do know is in the Land Enclosures Act of 1815 the Commissioner Joseph Wollen awarded to the Surveyors of the Highways of the Parish of Yatton and Kenn the quarry for making, amending and repairing the highways of the said parishes.

In 1840 from the history of Cleeve Church it was written that a Mr Blackman raised 150 tons of stone from Cleeve Quarry to build Cleeve Church.

In 1841 the Tythe map recorded lot number 599 Parish Quarry is in the ownership of Yatton Parish Officers.

In 1907 the Weston Mercury reports on the Minutes of Yatton Parish Council where Cllr Salmon said he had been visited by Cleeve men who quarried stones from Cleeve Quarry for the contractor Mr C Wear and they said they were approached on Saturday morning by Mr Hawkins the District Council Surveyor and had been spoken to in an gentlemanly manner and he told them that when he reached the quarry the stones were not ready to be measured and ordered the men out of the quarry and must not raise another stone. And then he later went on to import three men from Backwell to do their work, Mr Salmon contended that if the men had not been raising the stone satisfactorily he should have contacted Mr C Wear the contractor, but it was agreed that they should write to the District Council and find out more about this incident.

This incident must have been resolved as we know from eye witnesses in the early 20th Century that Cleeve men were still working in the quarry.

In 1925 the Western Daily Press reporting on the Minutes from Yatton Parish Council meeting where the Clerk was instructed to write to the District Council and ask for further information of the amount of stone taken from Cleeve Quarry without the Council's consent.

In 1935 the Western Daily Press reported on the Minutes of Yatton Parish Council that Mr E H Millier withdrew his application for permission to use stone from Cleeve Quarry to build a Public Hall in Cleeve.

The Commons Registration Act 1965 required local authorities in England and Wales to establish registers of common land and town or village greens within their areas; recording the extent of the land, the owners of the land and rights of common held over them.

A transcription of the Commons Registration Act 1965 concerning the Quarry is shown on Page 15.

This is all the information gleaned from written records, perhaps there are others in the village that maybe have more information of the history of the quarry?

In next month's edition of AAC will be further information from eye witness accounts of how the men quarried the stone.

Dave Ridley

TIP FROM CLEEVE NURSERY

Check tree ties and stakes. Adjust those that are too tight and tighten those that are not! Make sure the top tie is near to the top of the stake so that it prevents the tree rubbing. Make certain that the stake is still sound and that it isn't the tree that is holding the stake up!

**Your local shop for newspapers, off licence, groceries,
lottery, PayPoint, cashback and Post Office**



**Opening hours Mon-Fri 6.00am-10.00pm, Sat-Sun 7.00am-10.00pm
Post Office Tuesday and Friday 9.00am-12.00pm
Tel 01934 834893**

POST OFFICE OPENING TIMES

Cleeve (Good News)
Tuesday & Friday 09.00 – 12.00
Claverham (Village Hall)
Monday & Wednesday 09.00 -12.00

LOCAL POST-BOX COLLECTION TIMES

	Mon-Fri	Sat.
Woodview Drive	9.00am	7.00am
Bishops Road	9.00am	7.00am
Main Road (Old PO)	9.00pm	7.00am
Yatton PO	5.45pm	11.15am
Congresbury PO	5.15pm	11.15am
Congresbury Broad St	5.30pm	9.00am
Backwell PO	5.30pm	12.15pm
Clevedon Delivery Office	6.00pm	



Great Western Air Ambulance Charity GWAAC

Back in November a couple of us were lucky enough to enjoy an afternoon with the Air Ambulance, this is a vital service to our area and what most people do not realise is that it is a charity entirely funded by the general public although it works closely with NHS. Without donations it would not be able to continue. We were shown the amazing equipment that is taken on the air ambulance to emergencies that are so critical that they require specialist skills of the team at the scene of the accident or medical incident including at times performing actual operations. All the Critical care Doctors and paramedics are highly qualified and bring the skills and expertise of the emergency department to the patient, the service runs 24 hours a day. Following our visit, one of the Supporter Coordinators based at the Almondsbury Centre has agreed to come and give the 'Mothers' Union' a talk about GWAAC with the opportunity to ask questions, on **TUESDAY 19th MARCH** at 12.00 in the Holy Trinity Church room, this will be **open to anyone in both Cleeve and Claverham** to attend, all we ask is that anyone wanting to come lets Lin know on 01934 838515 if they wish to stay for lunch (£3.00).



CLEEVE VILLAGE HALL

Are you looking for a venue for a party, wedding, meeting, workshop or a space for a corporate event?

Cleeve village hall could be the venue for you.

Facilities include the main hall with a capacity for up to 120 people, as well as a separate side room & kitchen.

Competitive rates

For further details please contact Gill Roe

gillroe@btopenworld.com

01934 832917



Renewable Energy Installers

Arrange your free, no obligation quote today
Find out how much you could save!



01275 461 800

info@solarsense-uk.com

www.solarsense-uk.com

Helios House, Brockley Lane,
Backwell, Bristol, BS48 4AH



**VISIT US AT
THE SWAN INN, ROWBERROW &
THE LANGFORD INN, LOWER LANGFORD**

Award-winning seasonal dishes and
Butcombe beer, fine wines and classic cocktails

Traditional Sunday lunches

Private hire spaces, ideal for meetings and events

Boutique bedrooms, full of cosy charm

Butcombe Loyalty Club members get 25% off
food every Wednesday and 20% off bedroom
rates Sunday-Thursday

Dogs welcome

Book today: butcombe.com/our-pubs



VILLAGE DIARY

of
EVENTS IN AND AROUND CLEEVE



LOCAL MARKETS

1st Saturday of month - Kingston Seymour
2nd Saturday of month - Kenn & Yatton
3rd Saturday of month - Claverham

FEBRUARY 2024

Yatton Music Society. February 3rd. St Mary's Church Yatton. 7:30pm

Yatton Local History Society. February 6th. Yatton Methodist Church. 7:30pm

Holy Trinity Church. February 13th. Pancake Luch. Cleeve Village Hall. 12noon - 2:00pm

Holy Trinity Church. February 27th. Lent Lunch. Church Room. 12noon - 2:00pm

Yatton Music Society. February 24th. St Mary's Church Yatton. 7:30pm

MARCH 2024

Mother's Union. March 19th. Air Ambulance Talk. Holy Trinity Church Room. 12noon

APRIL 2024

FOCOS Bingo Night. April 12th. Cleeve Village Hall

ONGOING

Cleeve Knitting Knights. Alterknit Universe. Sundays. 1 - 5pm

Council Meetings. 2nd Tuesday each month except August and December.
Cleeve Village Hall. 7:30pm

Soupa Thursday. Holy Trinity Church. Weekly. Noon-4pm

Brockley Stores

Fresh produce including seasonal and locally grown
Good range of cheese and dairy
In-house sliced ham, charcuterie, olives & anti-pasti
Daily delivery of artisan breads
Groceries, sweets and chocolates
An extensive range of handmade food

Brockley Stores where food is.....

SOURCED WITH CARE
SOLD WITH INTEGRITY
SEVEN DAYS A WEEK

deliciously different

01275 462 753

Brockley Stores
Main Road (A370)
Brockley, North Somerset
Mon - Sat 8am - 6pm
Sunday 9am - 5pm



The home of quality plants, expert
advice & inspiration for your garden
Located just 10 miles outside Bristol

Quality Outdoor Plants

Unusual Houseplants

Peat-Free Compost

Beautiful Gifts & Cards

Seeds & Bulbs

Wildlife Care

Indoor & Outdoor Pots

Café serving fresh food & drinks



Follow us on Facebook & Instagram for updates

www.cleevenursery.co.uk

138 Main Road BS49 4PW

01934 832134 / info@cleevenursery.co.uk

LOCAL DIRECTORY
ALL CODES 01934 UNLESS OTHERWISE STATED

Should your group be listed here? Are your entries correct?

Chemists	Backwell	(01275) 462386
	Yatton	832366
Clavertots	Michele Jenkinson	838671
Cleeve Guides	Helen Mortimer	(01454) 771957
Cleeve Scouts/Cubs	Steve Atrill	833912
Cleeve Toddlers	Rebecca York	0759 674905
Community Resilience	Steve Molloy	834412 / 07988 656023
	Ross Floyd	(01275) 462211 / 07974 308398
Court de Wyck School Assc	Sarah Palmer	(01275) 462068
Cricket Club	clevecricketclub@outlook.com	John Hance
		07881 374958
Cricket Youth Team	Carey Elswood	clevecc.yahoo.com
Dentist	Cleeve	835753
Dog Training	Mrs Herman	834498
Dog Warden - Environmentalprotectiongeneralenquiries@n-somerset.gov.Uk		(01275) 888802
FOCOS	Mrs Gill Roe	832917
Football (Sporting Weston Football)	Gary Booth	sportingwestonfc@gmail.com 0791952705
Guide Dogs	Mrs Jane Newton	(01275) 873024
Holy Trinity (Churchwardens)	Nick Cush	832059
Holy Trinity (Team Minister)	c/o Team Office	832184
Ladies Group	Mrs Diana Cook	834621
Medical Centres	Backwell	(01275) 465100
	Yatton	839820
Mothers' Union	Andrea Stoddart	832458
Noise nuisance	Noise Control Officer	634847
North Somerset Council	(All Departments)	888888
Parochial Church Council	Dave Mortimer	838515
Parish Council	Andy Warren	07932 191964
Playing Field Trustees	Alice Jones	877208
POLICE	(NON-999 calls)	101
Post Offices	Backwell	(01275) 462721
	Yatton	832201
	Cleeve (Good News)	833295
	Claverham (Village Hall)	876581
Registrar	Births, Marriages, Deaths	427552
Sinclair Pavilion (Bookings)	Alice Jones	877208
Colin Warren		07944 758510
Table Tennis Club	Mr Mike Withyman	833986
Tennis Club	clevetennisclub@gmail.com	835150
Tennis Club Junior Coaching	John Tate	(johntatetennis@talk21.com)
		(01275) 464373
Village Agent	Sarah Friend	07422078548
Village Hall Bookings	Mrs Gill Roe	832917
Village Hall Secretary	Diana Cook	834621
YACWAG (Wildlife Action)	Mrs. Win Lowman	833596
Yatton History Society	Mrs Marianne Pitman	838801
Yatton Horticultural Society	Mrs Joan Pittock	832790
Yatton Music Society	David Ford	830255
Yatton Ramblers	Peter Marshall	833916

Clarkes Catering of Wroughton

Fresh homemade food delivered for business lunches, funerals, cream teas and cold buffets

Wroughton 01934 862085
 email: vicky.clarke@talk21.com
www.clarkesfood.com




imagine IT

Pauline Leverett
 07944 558587
www.imagine-it.co.uk

Web design & hosting
 Small websites for new businesses
 Design for print




IONAIDA
SOFT FURNISHINGS

- Curtain advice, make-up, fitting, poles & tracks.
- Roman, Venetian, vertical & roller blinds.
- Upholstery fabrics and re-upholstery.
- Large range of fabric and wallpaper samples.
- Cushions, bedding and much more, just ask....

A large selection of fabrics for all budgets
 Over 30 years experience - Company established in 2005
01275 464057 or 07854 525472
www.ionaida.com




J. A. Frost
B.A., B.Mus., Hon.TCM
 (formerly Senior Examiner in Music,
 Trinity College London)
Consultant for all levels of music examinations, and tuition in music theory
 27 Cleeve Drive, Cleeve, BS49 4NW
Tel: 01934 832589

LAWN MOWERS

Repairs / Servicing / Sharpening /
 New & Reconditioned Sales / Ride-on
 Tractor Mowers / Shear Sharpening

Tel: (01275) 464403

King Garden Machinery
 Unit 5, Chelvey Waterworks
 Chelvey, Nr. Backwell



S.E. HARRIS
 TREE SERVICES LTD

01934 835652
07957 156358

ALL TREE WORK UNDERTAKEN
 FREE QUOTATIONS

NC Arb - NPTC Fully Insured
 e: sam@seharristreeservices.co.uk
 w: seharristreeservices.co.uk

Local Beer - Brewed on Iwood Lane
 Delivered to your door



Twisted Oak Brewery - Yeewood Farm
 Wroughton BS40 5NU
 Tel.01934 310515
www.twistedoakbrewery.co.uk

TIP FROM CLEEVE NURSERY

Cover a piece of cultivated veg patch to trap the weak winter sun's warmth so that early sowings of carrots, parsnips, peas and other vegetables can be made. Use clear polythene and lay it flat on the soil but weight down the edges to stop it blowing away.

RELAX
YOU'RE IN
SAFE
HANDS



Robin King

Estate
Agents

01934 876226